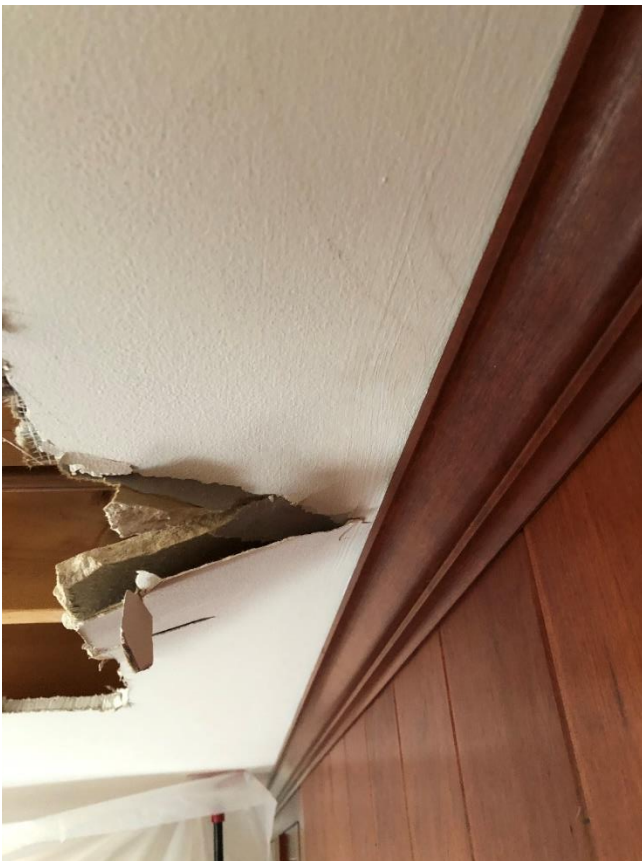


Losses With Moisture in Wood

The restoration company must dry the site to pre loss condition, and in doing so, it is important to do it gradually when it is a finished cherry or other exotic species, to avoid causing permanent cupping conditions.



Stain in the wood *****



This site had a high degree of difficulty to avoid damage to the wood— you can see staining indicating water presence above and inside the area of the clear cherry crown molding. The drywaller masked and flat taped his product successfully, and the painter had to do it too.