

## CUSTOM SHOWER 2

PAGE 1 OF 2

For Custom Shower 2, Advocate used the KBRS Point Drain System 60 x36 inch right drain model and a 36 inch KBRS bench seat for an existing shower alcove remodeling job. The twenty year old home needed some updates, and Advocate was happy to help. We used (customer chosen products and her design) TEC brand tile and mortar products for this installation.

Advocate Insurance Restoration & Remodeling proudly uses KBRS products.

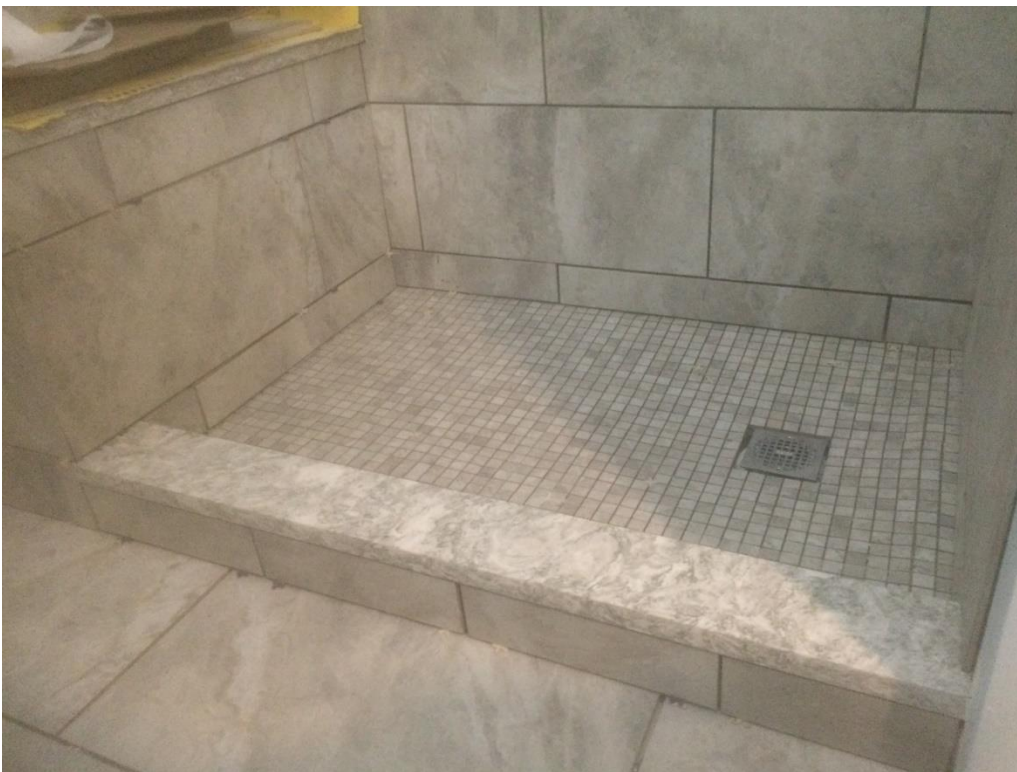
KBRS LOGO USED WITH PERMISSION OF KBRS®



Granite bench and granite shower dam add such a great finish here.



Niche and corner shelves for every bath product she could ever want.



We use spacers to ensure a great quality finished product, and a level to pitch the slope of the dam inward. This closeup shows why the point drain system of KBRS works so well.